

# GAUMER PROCESS

HEATERS  
SYSTEMS  
CONTROLS

## APPLICATIONS

Steam for tanks and storage tanks, reactions, distillations, autoclaves, dyestuffs, food processing, jacketed vessels, pipe tracing, viscous materials, fuel oil line heating, comfort heating, and humidification.

## LISTINGS

Built in accordance with Section I Code S of ASME Boiler and Pressure Vessel Codes. It is UL Listed and CSA certified.

## AVAILABILITY

Three (3) to six (6) weeks, specials in eight (8) to (10) weeks.

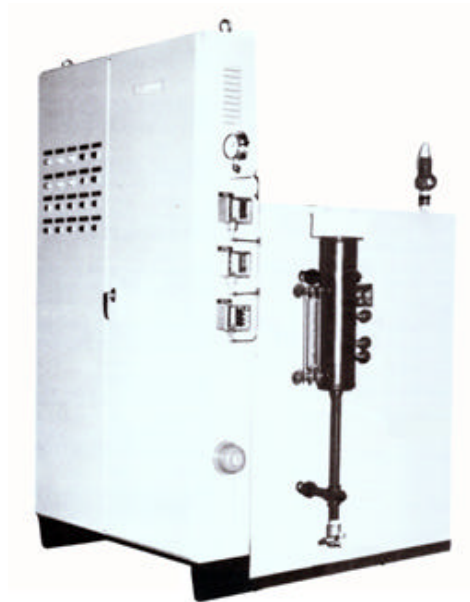
## STANDARD FEATURES

- Liquid Level / LWCO (both main and secondary) Electronic controller automatically maintains proper water level and powers down the generator when water supply in the boiler drops below a safe operating level.
- Water Level Sight Glass allows constant observation of water level while boiler is operating.
- Operating Pressure Control maintains proper steam pressure within steam generator.
- Manual Reset Pressure Control provides high limit pressure shut down with manual reset.
- ASME Coded Steam Safety Valve automatically opens should excess steam pressure develop inside generator.
- Blowdown / Drain Valves facilitate the emptying of the pressure vessel during blowdown/drain sequence.
- Steam Pressure Gauge allows visual observation of steam pressure.

## Electric Steam Generators

Type GVS - 210 KW to 1620 KW

Trimmed at 150 PSIG



- Modulating proportional sequencer with operating mode indicator lights.
- Check valve with solenoid feedwater valve
- Integrally mounted and wired magnetic contactors with Class J 600V fusing
- Integrally mounted control transformer with fused primary and fused/grounded 120 VAC secondary.
- Class J (600 VAC) Subdivided Circuit Fusing
- Electric Heating Elements have Incoloy sheath material, and are welded construction.
- Rugged construction makes steam generator suitable for most industrial applications.
- Fully insulated (4 inches thick) pressure vessel minimizes heatloss and maximizes energy savings.

**For more information or to place an order call the Shuhart Company • 1-880-349-9898**

# GAUMER PROCESS

HEATERS  
SYSTEMS  
CONTROLS

## Type: GVS

Bhp	Condensate (Lbs./Hr.)	Gaumer Catalog Number	kW:	Volts	Quantity Circuits	Quantity Switches	Width (in.)	Length (in.)	Height (in.)	Net Wt. (lbs.)
21.42	633	<b>GVS210-240</b>	210	240	12	3	28	30	54	935
21.42	633	<b>GVS210-480</b>	210	480	6	3	28	30	54	935
24.48	723	<b>GVS240-240</b>	240	240	12	3	28	30	54	935
24.48	723	<b>GVS240-480</b>	240	480	8	3	28	30	54	935
27.54	814	<b>GVS270-240</b>	270	240	14	3	30	46	64	1480
27.54	814	<b>GVS270-480</b>	270	480	9	3	30	46	64	1480
30.6	904	<b>GVS300-240</b>	300	240	15	3	30	46	64	1530
36.72	1085	<b>GVS360-480</b>	360	480	10	3	30	46	64	1530
42.84	1266	<b>GVS420-480</b>	420	480	14	3	30	46	64	1700
48.96	1446	<b>GVS480-480</b>	480	480	14	3	48	52	78	2100
55.08	1628	<b>GVS540-480</b>	540	480	14	3	48	52	78	2250
64.26	1899	<b>GVS630-480</b>	630	480	16	3	48	52	78	2300
73.44	2170	<b>GVS720-480</b>	720	480	18	3	cs	cs	cs	2800
82.62	2441	<b>GVS810-480</b>	810	480	21	3	cs	cs	cs	3000
96.39	2848	<b>GVS945-480</b>	945	480	24	3	cs	cs	cs	3200
110.16	3255	<b>GVS1080-480</b>	1080	480	27	3	cs	cs	cs	3400
123.93	3662	<b>GVS1215-480</b>	1215	480	2	3	cs	cs	cs	3600
137.7	4069	<b>GVS1350-480</b>	1350	480	34	3	cs	cs	cs	3800
151.47	4476	<b>GVS1485-480</b>	1485	480	38	3	cs	cs	cs	4000
165.24	4883	<b>GVS1620-480</b>	1620	480	42	3	cs	cs	cs	4200

cs - Consult Factory

### FACTORY INSTALLED OPTIONS

- Auxiliary Low Water Cut-off
- Control Transformer with fused primary and fused/grounded secondary
- Automatic Blowdown System
- High Pressure Vacuum Breaker (required with condensate return system).
- Ammeter or Voltmeter
- Modulating proportional sequencer with operating mode indicator lights.
- SCR Stepless Control with 100% turndown capability
- Low Pressure Trim - 15, 30, and 50 are available options

### OPTIONAL EQUIPMENT

- High Pressure Cold Water Feed System
- Condensate Return System
- Blowdown Separator

**For more information or to place an order call the Shuhart Company • 1-880-349-9898**