



**Sta-Warm Electric**  
Heated Tank Specialists

Call Us  
1-888-S

[Home Page](#) [About Us](#) [Contact Us](#) [Site Map](#)

## Heated Tank Specialists

### About Us

We design and build electrically heated industrial equipment and accessories. Sta-Warm engineers have the experience and know-how to design and build the exact installation you need. A proposal, based on production data you supply, will be submitted without obligation.

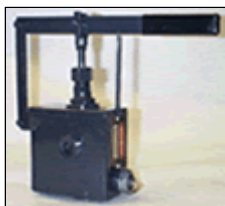
Sta-Warm also heats spray guns and hoses for use with pressurized tanks and numerous other types of outlets or dispensers which you may require.

For conveying melted compound from a central tank to points of use, the Sta-Warm Method permits rigid pipe to be satisfactorily heated in order to convey material many feet without a critical drop in temperature. Sta-Warm has supplied up to 800 feet of electrically heated pipe for a single installation.

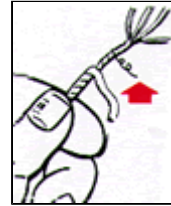
When above mentioned equipment and accessories are used in a properly engineered combination, it may be safely said that any practical amount of melted compound can be supplied continuously to any point in your plant where production requires its use. Sta-Warm engineers have the experience and know-how to design and build the exact installation you need. A proposal, based on production data you supply, will be submitted without obligation.



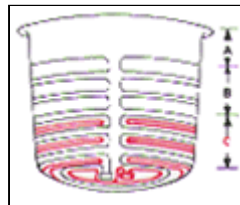
Here is a heated outlet, a gate valve, which is readily heated by the Sta-Warm Method and automatically controlled. It is an essential accessory to many installations which, unless heated, might cause compound to freeze in the outlet.



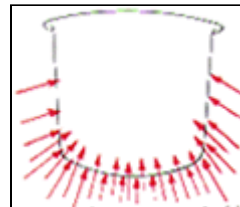
Here is another popular type of outlet, a needle valve, for dispensing melted compound in a small stream or a few drops at a time.



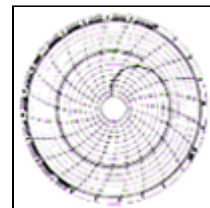
Here's the Sta-Warm heat which is wrapped closely & uniformly around sidewalls areas of any size or shape not you may require for many compounds



Here color is used to identify heating circuits as applied. In actual practice any number of circuits are possible to provide the necessary amount of heat in many zones of heat, as an installation may require for efficiency and operating ease.



The result is uniform heat without hot spots to burn tank and without cold unmelted clog outlets or slow down.



Accurate control of heat is accomplished with variable thermostats, 3 heat switch on-off switches. Accompanying a 24 hour test suggests that temperatures can be controlled by the Sta-Warm Method. It is not difficult to design a unit which holds even one degree Fahrenheit minus.



Does the compound formulation require agitation to maintain solids in suspension? Sta-Warm furnishes three basic power agitators. Any can be designed to meet your needs.

**Sta-Warm Electric Heated Tank Specialists**