

# Level control

## → Electrode holders and level probes

### ■ Accessories for level control

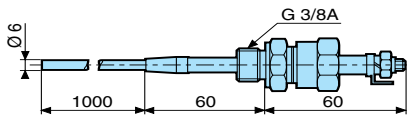


### Specifications

Type	Accessories	Operating temperature (°C)	Pressure	Code
S8	A light, compact, 3-probe electrode holder (stainless steel). Electrode holder and 1000 mm probe. Particularly recommended for drinks vending machines and in cases where installation space is limited.	80	Max. : 2 kg/cm <sup>2</sup>	<b>79 696 044</b>
S3	Electrode holder with a single probe supplied in a standard length of 1000 mm. (304 stainless steel) Mounting with external 3/8" BSP thread and hexagonal head. Use 24 mm. spanner for hexagon. Suitable for use on boilers, autoclaves	≤ 200	Max. : 25 Kg/cm <sup>2</sup>	<b>79 696 014</b>
S7	Protected electrode for mounting by suspension. Protective shell : PUC (S7) Electrode : stainless steel Length of cable as requested (ref. C1) : 79 696 001			<b>79 696 043</b>
S5	Suitable for high pressures and high temperatures. Metal parts of stainless steel, isolated by ceramic. 3/8" BSP mounting thread.	≤ 350	Max. : 15 Kg/cm <sup>2</sup>	<b>79 696 006</b>

### Dimensions

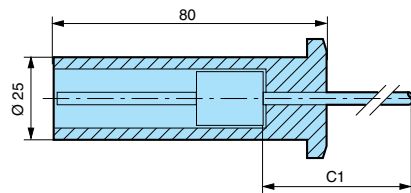
#### 79 696 014 - S3



Electrode holder with a single probe supplied in a standard length of 1000mm. (304 stainless steel).

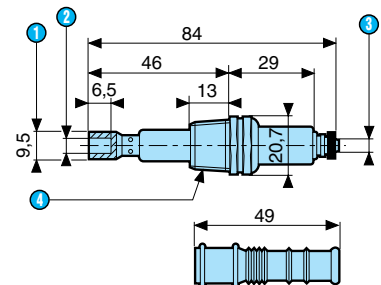
Mounting with external 3/8" BSP thread and hexagonal head.  
Use 24 mm. spanner for hexagon. Suitable for use on boilers, autoclaves and under high temperature conditions up to 200°C and high pressure conditions up to 25 kg/cm<sup>2</sup>

#### 79 696 043 - S7



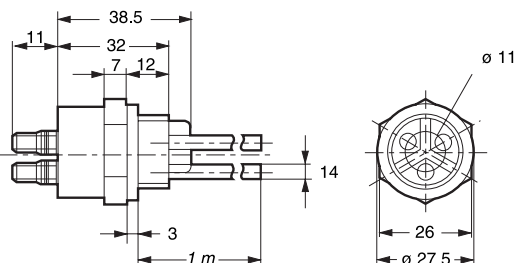
Protected electrode for mounting by suspension.  
Protective shell : PUC (S7)  
Electrode : stainless steel.  
Length of cable as requested (C1) : 79 696 001

#### S5



① 9.5 Across flats  
② 1/4 width  
③ 5/32 width  
④ 3/8 tapered NPT  
Suitable for high pressures and high temperatures. For use up to 350 °C and 15 kg/cm<sup>2</sup>.  
Metal parts of stainless steel, isolated by ceramic.  
3/8" BSP mounting thread.

#### 79 696 044 - S8



A light, compact, 3-probe electrode holder (stainless steel).  
Electrode holder and 1000 mm probe. Particularly recommended for drinks vending machines and in cases where installation space is limited.

Ambiente température : 80 °C  
Max. pressure : 2 kg/cm<sup>2</sup>